

Legend

- Interstate
- US Highway
- State Road
- County Border

I-75 Diversion Routes

District Two

February 2022



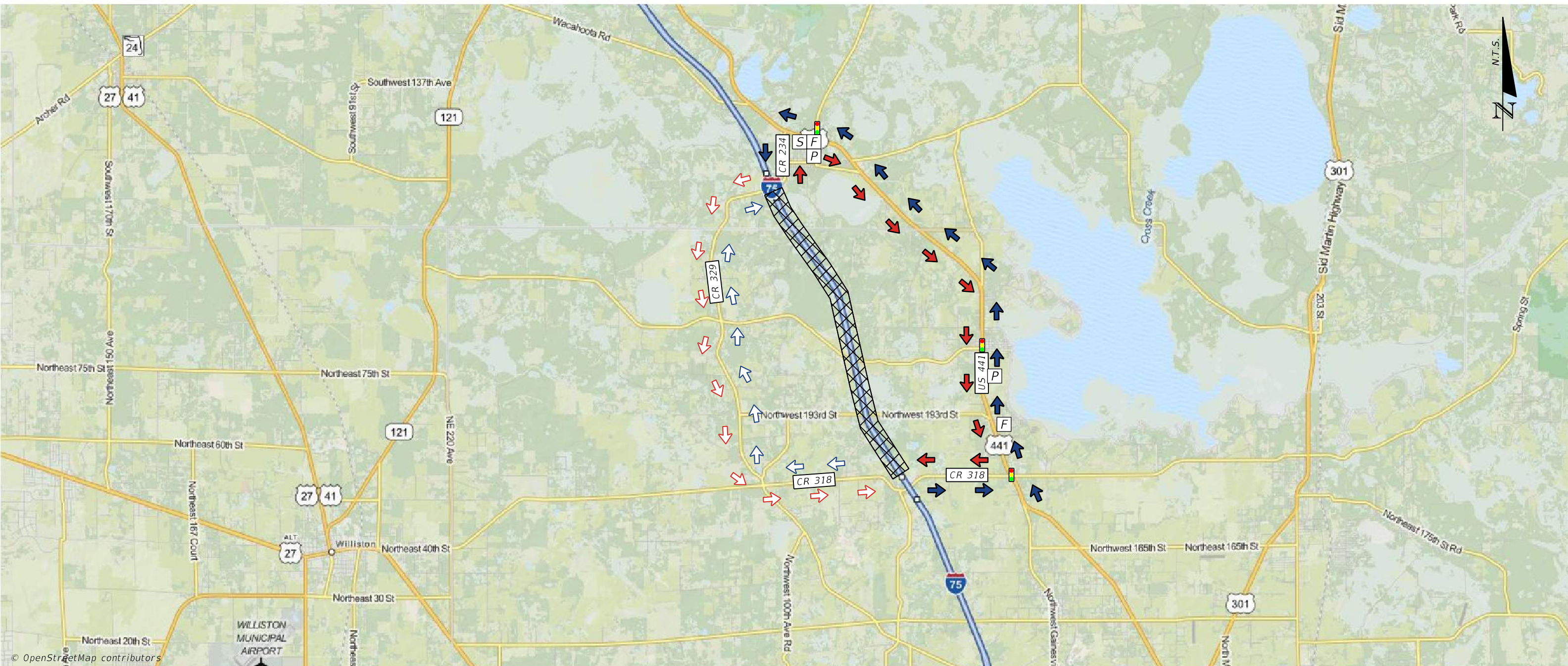
I-75 Diversion Maps Directory



Map ID	County	Exits	Limits	Direction	Primary Route	Secondary Route	Remarks
I-75 #1	ALACHUA/ MARION	368 TO 374	CR 318 TO CR 234	NB	EAST ON CR 318 TO US 441 NORTH TO CR 234 WEST TO I-75	WEST ON CR 318 TO CR 329 NORTH TO CR 234 EAST TO I-75	
				SB	EAST ON CR 234 TO US 441 SOUTH TO CR 318 WEST TO I-75	WEST ON CR 234 TO CR 329 SOUTH TO CR 318 EAST TO I-75	
I-75 #2	ALACHUA	374 TO 382	CR 234 - TO SR 121 (SW WILLISTON RD)	NB	EAST ON CR 234 TO US 441 (SR 25) NORTH TO SR 121 (SW WILLISTON RD) WEST TO I-75	WEST ON CR 318 TO CR 335 NORTH TO SR 121 (WILLISTON ROAD) EAST TO I-75	COORDINATE WITH WILLISTON POLICE DEPARTMENT
				SB	EAST TO SR 121 (SW WILLISTON RD) TO US 441 (SR 25) SOUTH TO CR 234 WEST TO I-75	WEST ON SR 121 (WILLISTON ROAD) TO CR 335 SOUTH TO CR 318 EAST TO I-75	
I-75 #3	ALACHUA	382 TO 384	SR 121 (SW WILLISTON RD) TO SR 24 (SW ARCHER RD)	NB	EAST ON SR 331 (SW WILLISTON RD) TO SR 121 (SW 34TH ST) NORTH TO SR 24 (SW ARCHER RD) WEST TO I-75	WEST ON SR 331/SR 121 (SW WILLISTON RD) TO SW 41ST BLVD NORTH TO SR 24 (SW ARCHER RD) EAST TO I-75	
				SB	EAST ON SR 24 (ARCHER RD) TO SR 121 (SW 34TH ST) SOUTH TO SR 331 (SW WILLISTON RD) WEST TO I-75	WEST ON SR 24 (SW ARCHER RD) TO SW 41ST BLVD SOUTH TO SR 331/SR 121 (SW WILLISTON RD) EAST TO I-75	
I-75 #4	ALACHUA	384 TO 387	SW 24 (SW ARCHER RD) TO SR 26 (W NEWBERRY RD)	NB	WEST ON SR 24 (SW ARCHER RD) TO SW 75TH ST NORTH TO SR 26 (W NEWBERRY RD) EAST TO I-75	EAST ON SR 24 (SW ARCHER RD) TO SR 121 (SW 34TH ST) NORTH TO SR 26 (W NEWBERRY RD) WEST TO I-75	
				SB	WEST ON SR 26 (W NEWBERRY RD) TO SW 75TH ST SOUTH TO SR 24 (SW ARCHER RD) EAST TO I-75	EAST ON SR 26 (W NEWBERRY RD) TO SR 121 (SW 34TH ST) SOUTH TO SR 24 (SW ARCHER RD) WEST TO I-75	
I-75 #5	ALACHUA	387 TO 390	SR 26 (W NEWBERRY RD) TO CR 222 (NW 39TH AVE)	NB	WEST ON SR 26 (W NEWBERRY RD) TO NW 98TH ST NORTH TO CR 222 (NW 39TH AVE) EAST TO I-75		
				SB	WEST ON CR 222 (NW 39TH AVE) TO NW 98 TH ST SOUTH TO SR 26 (W NEWBERRY RD) EAST TO I-75		
I-75 #6	ALACHUA	390 TO 399	SR 222 (NW 39TH AVE) TO US 441 (SR 25)	NB	EAST ON SR 222 (NW 39TH AVE) TO SR 121 (SW 34TH ST) NORTH TO US 441 (SR 25) NORTH TO I-75		
				SB	SOUTH ON US 441 (SR 25) TO SR 121 (SW 34TH ST) SOUTH TO SR 222 (NW 39TH AVE) WEST TO I-75		
I-75 #7	ALACHUA	399 TO 404	US 441 (SR 25) TO CR 236	NB	NORTH ON US 441 (SR 25) TO CR 236 EAST TO I-75	SOUTH ON US 441 (SR 20) TO CR 241 (NW 140TH ST) NORTH TO CR 236 WEST TO I-75	
				SB	WEST ON CR 236 TO US 441 (SR 25) SOUTH TO I-75	EAST ON CR 236 TO CR 241 (NW 140 TH ST) SOUTH TO US 441 (SR 20) NORTH TO I-75	
I-75 #8	ALACHUA/ COLUMBIA	404 TO 414	CR 236 TO US 41	NB	WEST ON CR 236 TO US 41 NORTH TO I-75	EAST ON CR 236 TO CR 241 NORTH TO SR 238 WEST TO US 41 SOUTH TO I-75	WEIGHT LIMIT ON CR 241 AND CR 236
				SB	SOUTH ON US 41 TO CR 236 EAST TO I-75	NORTH ON US 41 TO SR 238 EAST TO CR 241 SOUTH TO CR 236 WEST TO I-75	
I-75 #9	COLUMBIA	414 TO 423	US 41 TO CR 242	NB	NORTH ON US 41 TO CR 242 WEST TO I-75		
				SB	EAST ON CR 242 TO US 41 SOUTH TO I-75		
I-75 #10	COLUMBIA	423 TO 427	SR 47 TO US-90 (SR 10)	NB	NORTH ON SR 47 TO US 41 (SR 100) NORTH TO US 90 (SR 10) WEST TO I-75	WEST ON CR 242 TO SR 247 NORTH TO CR 252B NORTH TO US 90 (SR 10) EAST TO I-75	
				SB	EAST ON US 90 (SR 10) TO US 41 (SR 100) SOUTH TO SR 47 SOUTH TO I-75	WEST ON US 90 (SR 10) TO CR 252B SOUTH TO SR 247 SOUTH TO CR 242 EAST TO I-75	

Map ID	County	Exits	Limits	Direction	Primary Route	Secondary Route	Remarks
I-75 #11	COLUMBIA	427 TO 435	US 90 (SR 10) TO I-10	NB	EAST ON US 90 (SR 10) TO US 41 (SR 100) NORTH TO I-10 WEST TO I-75	WEST ON US 90 (SR 10) TO CR 137 NORTH TO I-10 EAST TO I-75	
				SB	EAST ON I-10 TO US 41 (SR 100) SOUTH TO US 90 (SR 10) WEST TO I-75	WEST ON I-10 TO CR 137 SOUTH TO US 90 (SR 10) EAST TO I-75	
I-75 #12	COLUMBIA/ SUWANNEE	435 TO 439	I-10 TO CR 136 (THUNDER RD)	NB	EAST ON I-10 TO US 41 NORTH TO CR 136 (THUNDER RD) WEST TO I-75	WEST ON I-10 TO CR 137 NORTH TO CR 136 (THUNDER RD) EAST TO I-75	
				SB	EAST ON CR 136 (THUNDER RD) TO US 41 SOUTH TO I-10 WEST TO I-75	WEST ON CR 136 (THUNDER RD) TO CR 137 SOUTH TO I-10 EAST TO I-75	
I-75 #13	SUWANNEE/ HAMILTON	439 TO 451	CR 136 (THUNDER RD) TO US 129 (SR 51)	NB	EAST ON CR 136 (THUNDER RD) TO US 41 NORTH TO US 129 (SR 51) SOUTH TO I-75	WEST ON CR 136 (THUNDER RD) TO CR 136A WEST TO US 129 (SR 51) NORTH TO I-75	
				SB	NORTH ON US 129 (SR 51) TO US 41 SOUTH TO CR 136 (THUNDER RD) WEST TO I-75	SOUTH ON US 129 (SR 51) TO CR 136A EAST (THUNDER RD) TO CR 136 EAST TO I-75	
I-75 #14	HAMILTON	451 TO 460	US 129 (SR 51) TO SR 6	NB	NORTH ON US 129 (SR 51) TO US 41 NORTH TO SR 6 WEST TO I-75		
				SB	EAST ON SR 6 TO US 41 SOUTH TO US 129 (SR 51) SOUTH TO I-75		
I-75 #15	HAMILTON	460 TO 467	SR 6 TO CR 143	NB	EAST ON SR 6 TO US 41 (SR 25) NORTH TO CR 143 WEST TO I-75	WEST ON SR 6 TO CR 146 WEST TO CR 141 NORTH TO CR 152 WEST TO CR 143 EAST TO I-75	CR 143 LOAD LIMIT 50,000 LBS. NOT OVER 16,000 PER AXLE. CR 152 WEIGHT LIMIT 11 TONS
				SB	EAST ON CR 143 TO US 41 (SR 25) SOUTH TO SR 6 WEST TO I-75	WEST ON CR 143 TO CR 152 EAST TO CR 141 SOUTH TO CR 146 EAST TO SR 6 EAST TO I-75	
I-75 #16	HAMILTON TO GEORGIA STATE LINE	467 TO 5 (GA)	CR 143 TO SR 376 (LAKES BLVD)	NB	EAST ON CR 143 TO US 41 (SR 25)/US 41 (SR 7) NORTH TO SR 376 (LAKES BLVD) WEST TO I-75		
				SB	EAST ON SR 376 (LAKES BLVD) TO US 41 (SR 7)/US 41 (SR 25) SOUTH TO CR 143 WEST TO I-75		

CR 318 TO CR 234



NOTES

PRIMARY

NB NORTHBOUND VEHICLES DIVERTED EAST ON CR 318 TO US 441 NORTH TO CR 234 WEST TO I-75.

SB SOUTHBOUND VEHICLES DIVERTED EAST ON CR 234 TO US 441 SOUTH TO CR 318 WEST TO I-75.

SECONDARY

NB NORTHBOUND VEHICLES DIVERTED WEST ON CR 318 TO CR 329 NORTH TO CR 234 EAST TO I-75.

SB SOUTHBOUND VEHICLES DIVERTED WEST TO CR 234 TO CR 329 SOUTH TO CR 318 TO I-75.

LEGEND

AREA OF CLOSURE



FIRE STATION



PRIMARY ROUTE SB



HOSPITAL



PRIMARY ROUTE NB



POLICE STATION



SECONDARY ROUTE SB



SCHOOL



SECONDARY ROUTE NB



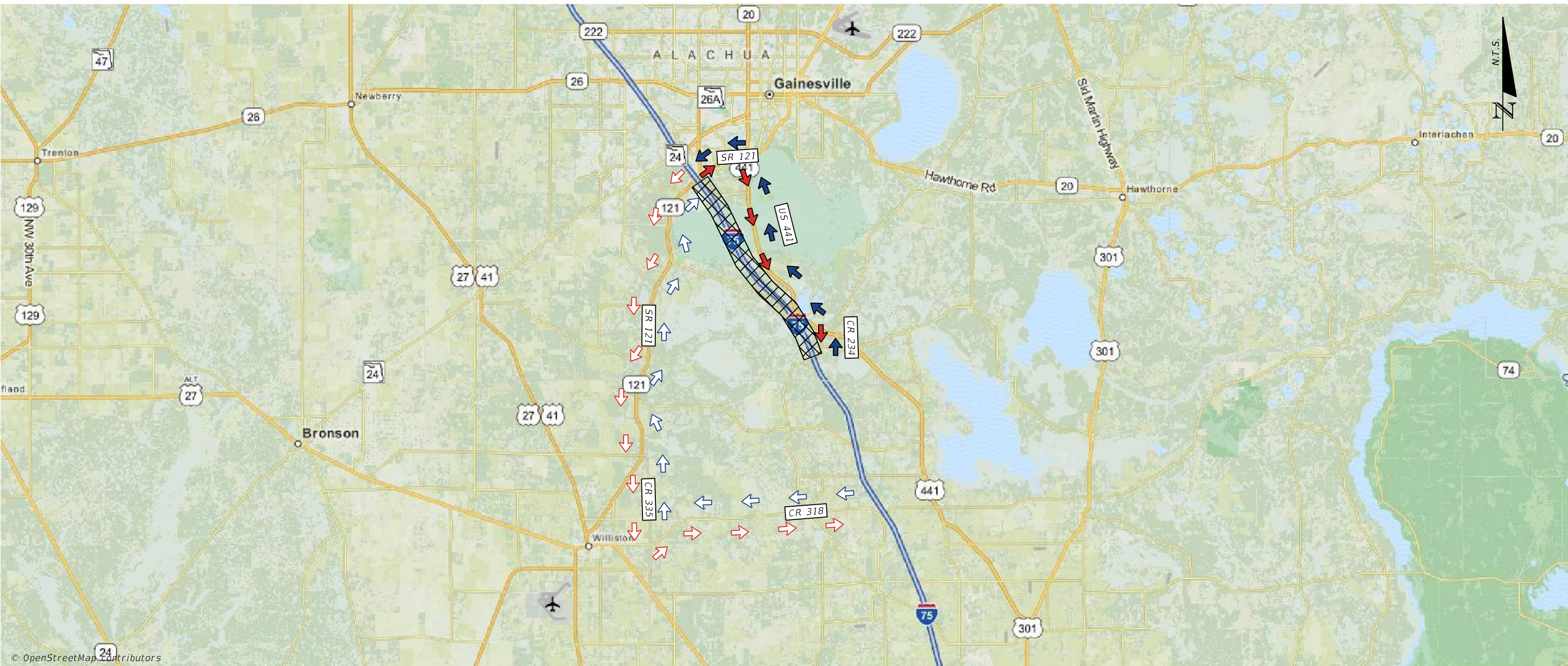
SIGNAL



CR 234 TO SR 121 (SW WILLISTON RD)



FEBRUARY 2022

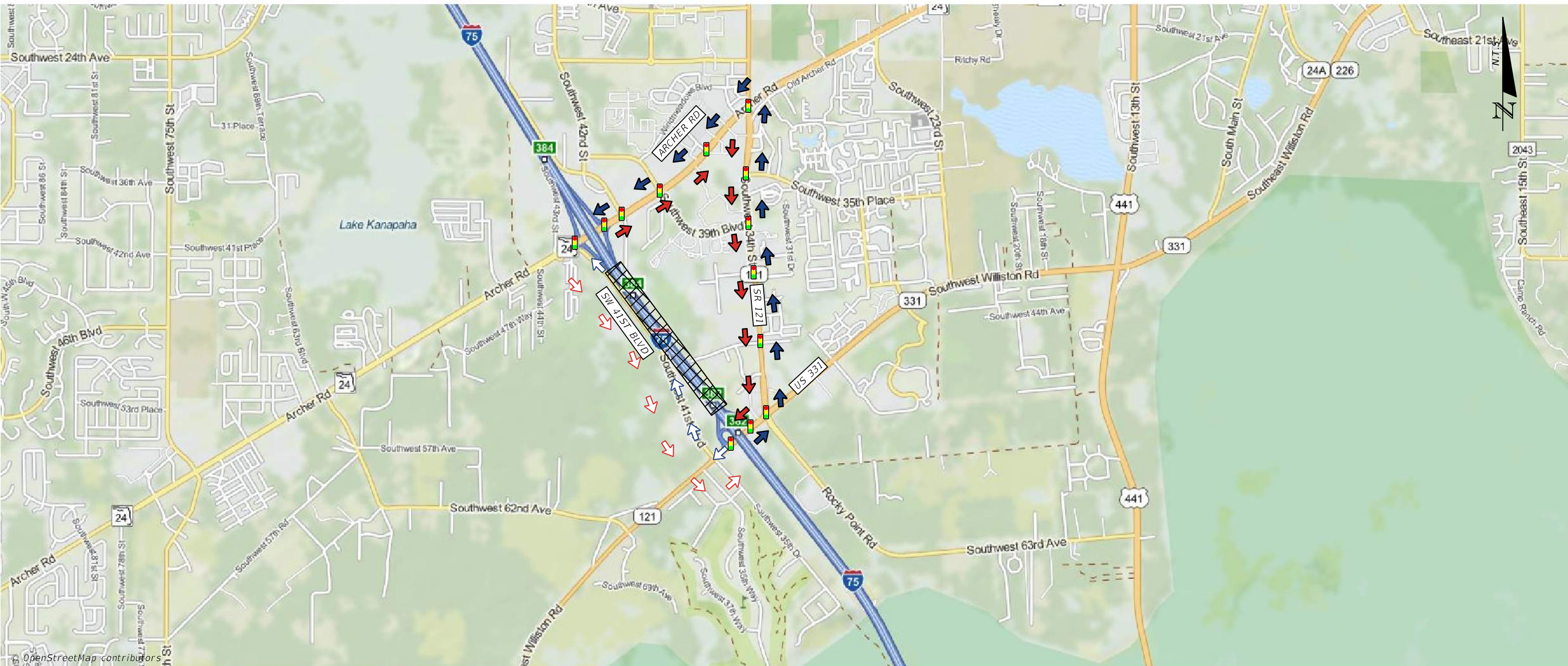


NOTES				LEGEND			
COORDINATE WITH WILLISTON POLICE DEPARTMENT.		PRIMARY	NB	NORTHBOUND VEHICLES DIVERTED EAST ON CR 234 TO US 441 (SR 25) NORTH TO SR 121 (SW WILLISTON ROAD) WEST TO I-75.	AREA OF CLOSURE	FIRE STATION	
			SB	SOUTHBOUND VEHICLES DIVERTED EAST ON SR 121 (SW WILLISTON ROAD) TO US 441 (SR 25) SOUTH TO CR 234 WEST TO I-75.	PRIMARY ROUTE SB	HOSPITAL	
		SECONDARY	NB	NORTHBOUND VEHICLES DIVERTED WEST ON CR 318 TO CR 335 NORTH TO SR 121 EAST TO I-75.	PRIMARY ROUTE NB	POLICE STATION	
				SB	SOUTHBOUND VEHICLES DIVERTED WEST ON SR 121 TO CR 335 SOUTH TO CR 318 EAST TO I-75.	SECONDARY ROUTE SB	SCHOOL
					SECONDARY ROUTE NB	SIGNAL	



SR 121 (SW WILLISTON RD) TO SR 24 (SW ARCHER RD)

FEBRUARY 2022



NOTES

PRIMARY

NB NORTHBOUND VEHICLES DIVERTED EAST ON SR 331 (SW WILLISTON RD) TO SR 121 (SW 34TH ST) NORTH TO SR 24 (SW ARCHER RD) WEST TO I-75.

SB SOUTHBOUND VEHICLES DIVERTED EAST ON SR 24 (ARCHER RD) TO SR 121 (SW 34TH ST) SOUTH TO SR 331 (SW WILLISTON RD) WEST TO I-75.

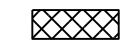
SECONDARY

NB NORTHBOUND VEHICLES DIVERTED WEST ON SR 331/SR 121 TO SW 41ST BOULEVARD NORTH TO SR 24 (ARCHER RD) EAST TO I-75.

SB SOUTHBOUND VEHICLES DIVERTED WEST ON SR 24 (ARCHER RD) TO SW 41 BLVD SOUTH TO SR 331/SR 121 EAST TO I-75.

LEGEND

AREA OF CLOSURE



FIRE STATION



PRIMARY ROUTE SB



HOSPITAL



PRIMARY ROUTE NB



POLICE STATION



SECONDARY ROUTE SB



SCHOOL



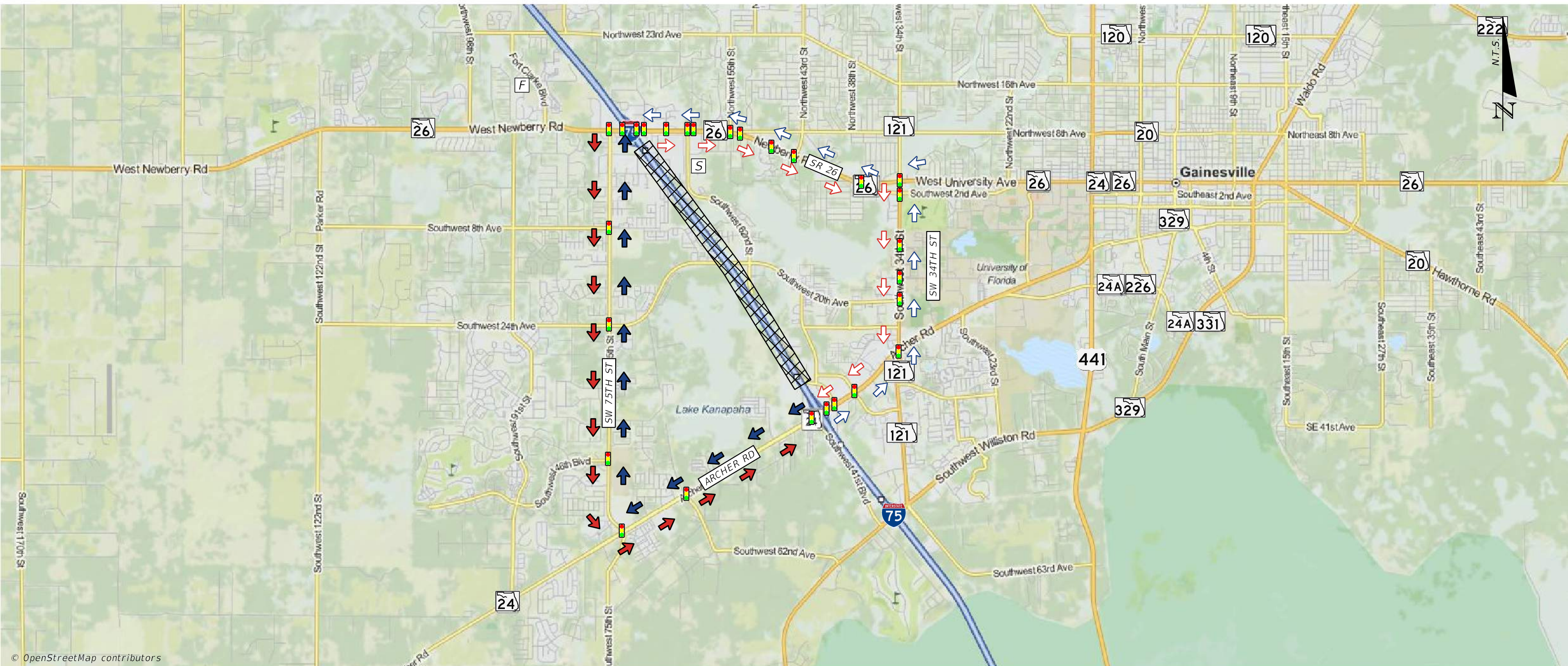
SECONDARY ROUTE NB



SIGNAL



SR 24 (SW ARCHER RD) TO SR 26 (W NEWBERRY RD)



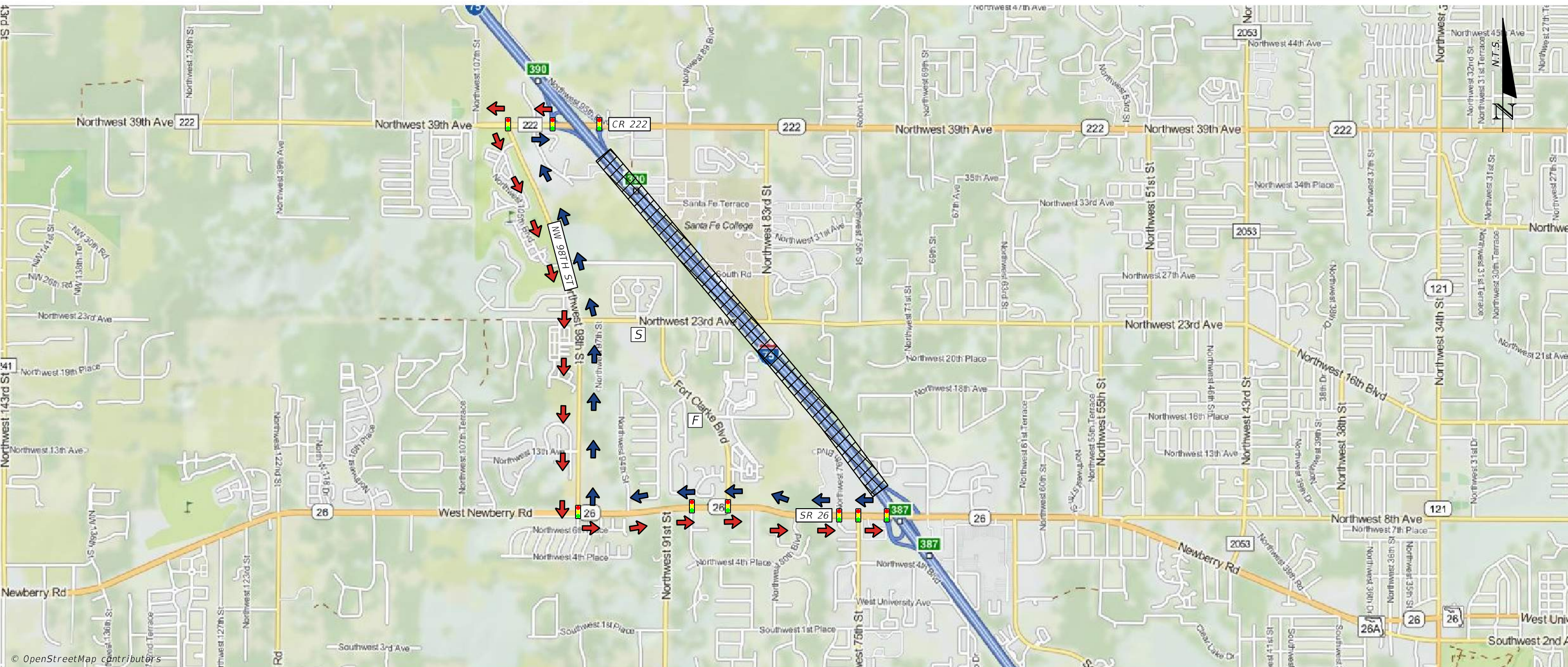
© OpenStreetMap contributors

NOTES		LEGEND	
PRIMARY	NB	NORTHBOUND VEHICLES DIVERTED WEST ON SR 24 (SW ARCHER RD) TO SW 75TH ST NORTH TO SR 26 (W NEWBERRY RD) EAST TO I-75.	AREA OF CLOSURE
	SB	SOUTHBOUND VEHICLES DIVERTED WEST ON SR 26 (W NEWBERRY RD) TO SW 75TH ST SOUTH TO SR 24 (SW ARCHER RD) EAST TO I-75.	PRIMARY ROUTE SB
SECONDARY	NB	NORTHBOUND VEHICLES DIVERTED EAST ON SR 24 (SW ARCHER RD) TO SR 121 (SW 34TH ST) NORTH TO SR 26 (W NEWBERRY RD) WEST TO I-75.	PRIMARY ROUTE NB
	SB	SOUTHBOUND VEHICLES DIVERTED EAST ON SR 26 (W NEWBERRY RD) TO SR 121 (SW 34TH ST) SOUTH TO SR 24 (SW ARCHER RD) WEST TO I-75.	SECONDARY ROUTE SB
			SECONDARY ROUTE NB

	FIRE STATION	[F]
	HOSPITAL	[H]
	POLICE STATION	[P]
	SCHOOL	[S]
	SIGNAL	

SR 26 (W NEWBERRY RD) TO CR 222 (NW 39TH AVE)

FEBRUARY 2022



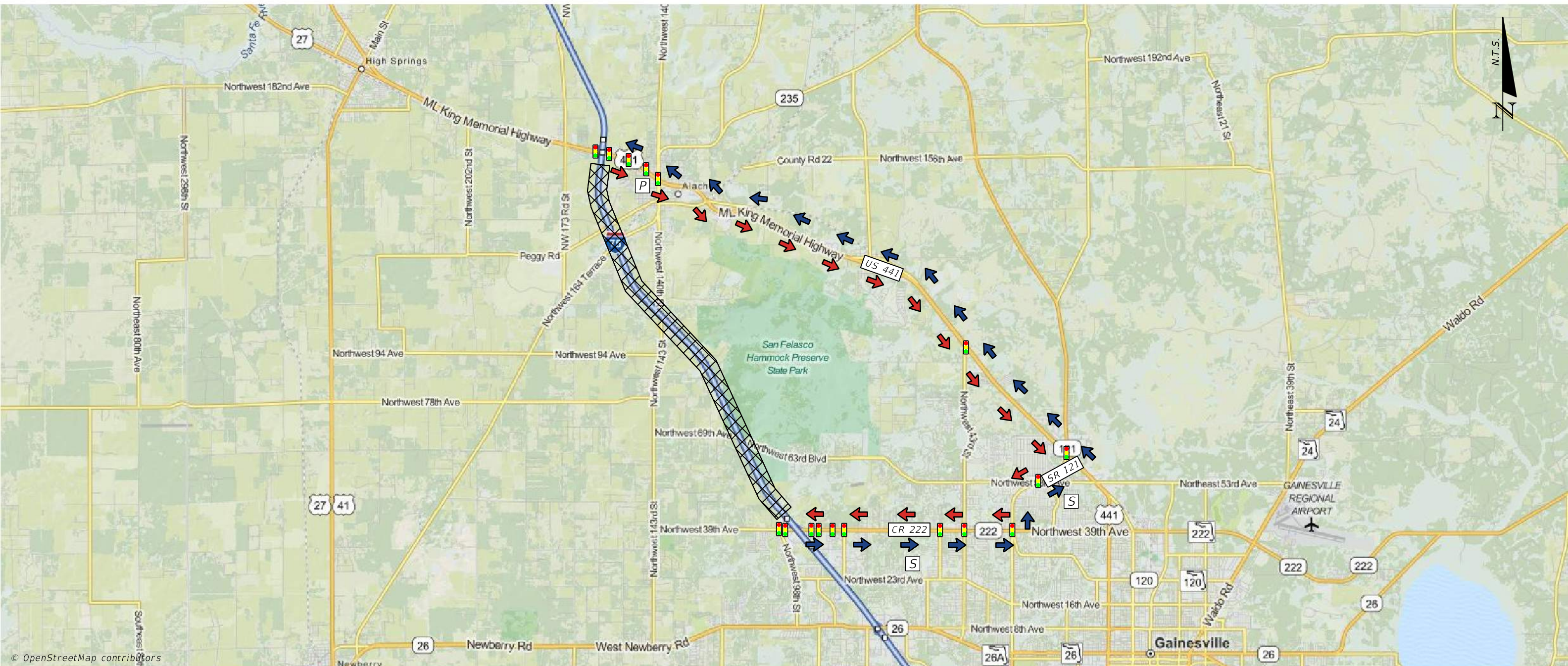
© OpenStreetMap contributors

NOTES		LEGEND				
PRIMARY	NB	NORTHBOUND VEHICLES DIVERTED WEST ON SR 26 (W NEWBERRY RD) TO NW 98TH ST NORTH TO CR 222 (NW 39TH AVE) EAST TO I-75.	AREA OF CLOSURE		FIRE STATION	
	SB	SOUTHBOUND VEHICLES DIVERTED WEST ON CR 222 (NW 39TH AVE) TO NW 98TH ST SOUTH TO SR 26 (W NEWBERRY RD) EAST TO I-75.	PRIMARY ROUTE SB		HOSPITAL	
SECONDARY	NB	N/A	PRIMARY ROUTE NB		POLICE STATION	
	SB	N/A	SECONDARY ROUTE SB		SCHOOL	
			SECONDARY ROUTE NB		SIGNAL	



FEBRUARY 2022

SR 222 (NW 39TH AVE) TO US 441 (SR 25)



© OpenStreetMap contributors

NOTES

PRIMARY

NB NORTHBOUND VEHICLES DIVERTED EAST ON SR 222 (NW 39TH AVE) TO SR 121 (SW 34TH ST) NORTH TO US 441 (SR 25) NORTH TO I-75.

SB SOUTHBOUND VEHICLES DIVERTED SOUTH ON US 441 (SR 25) TO SR 121 (SW 34TH ST) SOUTH TO SR 222 (NW 39TH AVE) WEST TO I-75.

SECONDARY

NB N/A

SB N/A

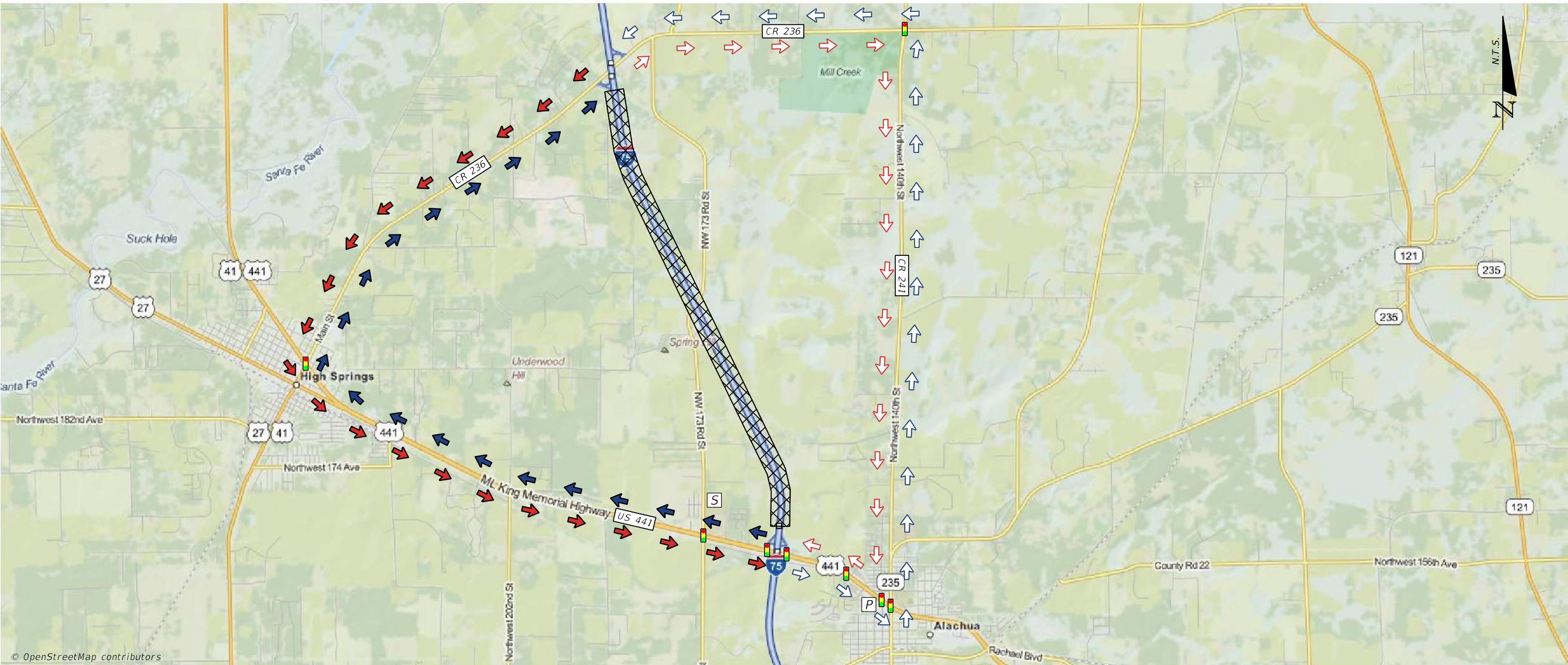
LEGEND

- AREA OF CLOSURE FIRE STATION
- PRIMARY ROUTE SB HOSPITAL
- PRIMARY ROUTE NB POLICE STATION
- SECONDARY ROUTE SB SCHOOL
- SECONDARY ROUTE NB SIGNAL



FEBRUARY 2022

US 441 (SR 25) TO CR 236



NOTES

PRIMARY

- NB** NORTHBOUND VEHICLES DIVERTED NORTH ON US 441 (SR 25) TO SR 236 EAST TO I-75.
- SB** SOUTHBOUND VEHICLES DIVERTED WEST ON CR 236 TO US 441 (SR 25) SOUTH TO I-75.

SECONDARY

- NB** NORTHBOUND VEHICLES DIVERTED SOUTH ON US 441 (SR 20) TO CR 241 (NW 140TH ST) NORTH TO CR 236 WEST TO I-75.
- SB** SOUTHBOUND VEHICLES DIVERTED EAST ON CR 236 TO CR 241 (NW 140TH ST) SOUTH TO US 441 (SR 20) NORTH TO I-75.

LEGEND

- AREA OF CLOSURE
- PRIMARY ROUTE SB
- PRIMARY ROUTE NB
- SECONDARY ROUTE SB
- SECONDARY ROUTE NB

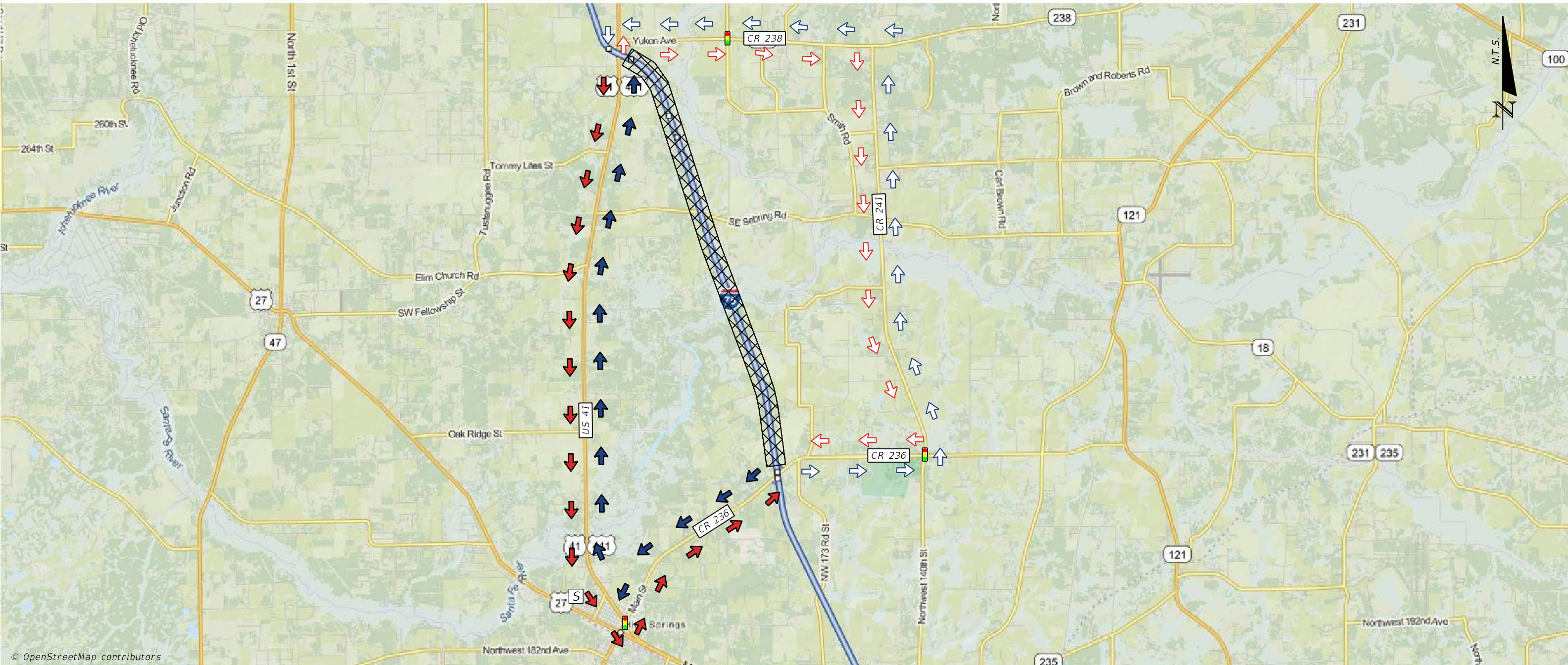
- FIRE STATION
- HOSPITAL
- POLICE STATION
- SCHOOL
- SIGNAL

- F
- H
- P
- S
- Signal



FEBRUARY 2022

CR 236 TO US 41



© OpenStreetMap contributors

NOTES

WEIGHT LIMIT ON CR 241 AND CR 236.

PRIMARY

NB NORTHBOUND VEHICLES DIVERTED WEST ON CR 236 TO US 41 NORTH TO I-75.

SB SOUTHBOUND VEHICLES DIVERTED SOUTH ON US 41 TO CR 236 EAST TO I-75.

SECONDARY

NB NORTHBOUND VEHICLES DIVERTED EAST ON CR 236 TO CR 241 NORTH TO SR 238 WEST TO US 41 SOUTH TO I-75.

SB SOUTHBOUND VEHICLES DIVERTED NORTH ON US 41 TO SR 238 EAST TO CR 241 SOUTH TO CR 236 WEST TO I-75.

LEGEND

AREA OF CLOSURE



FIRE STATION



PRIMARY ROUTE SB



HOSPITAL



PRIMARY ROUTE NB



POLICE STATION



SECONDARY ROUTE SB



SCHOOL



SECONDARY ROUTE NB



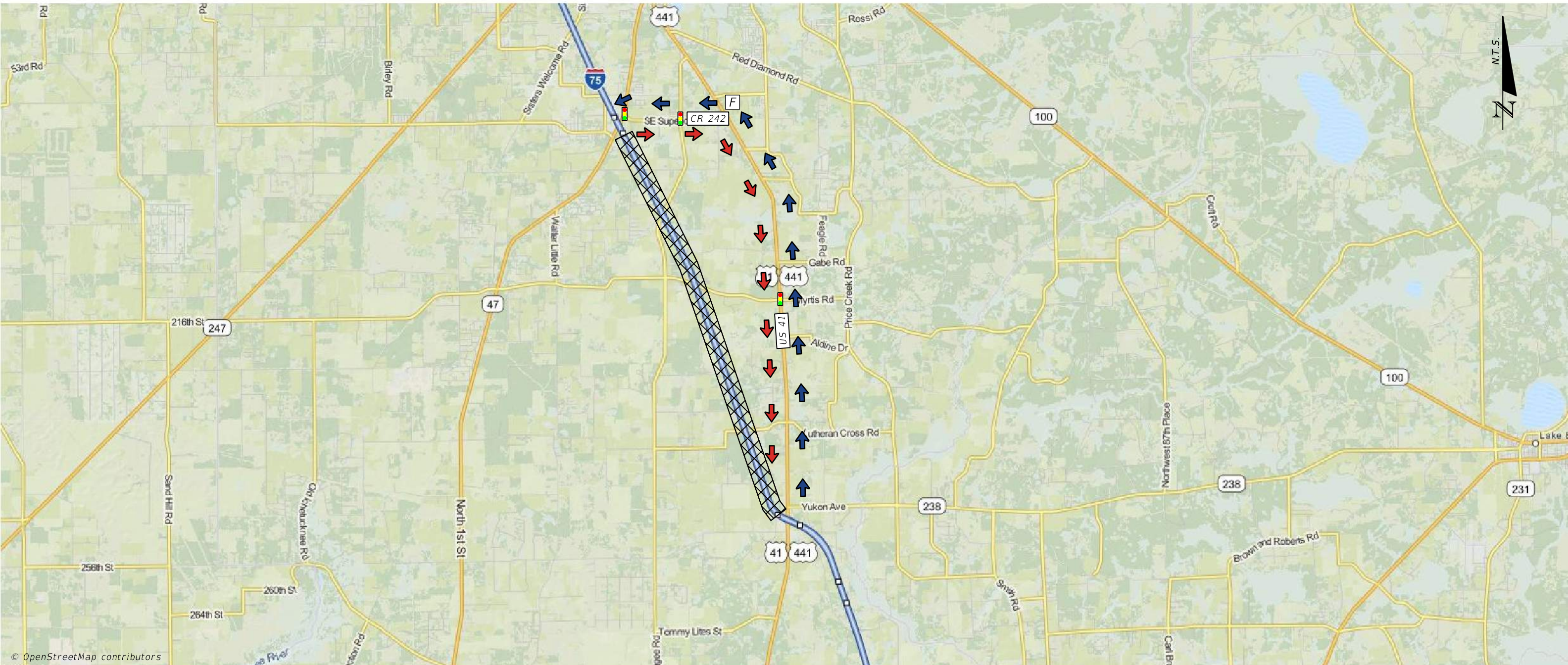
SIGNAL





FEBRUARY 2022

US 41 TO CR 242



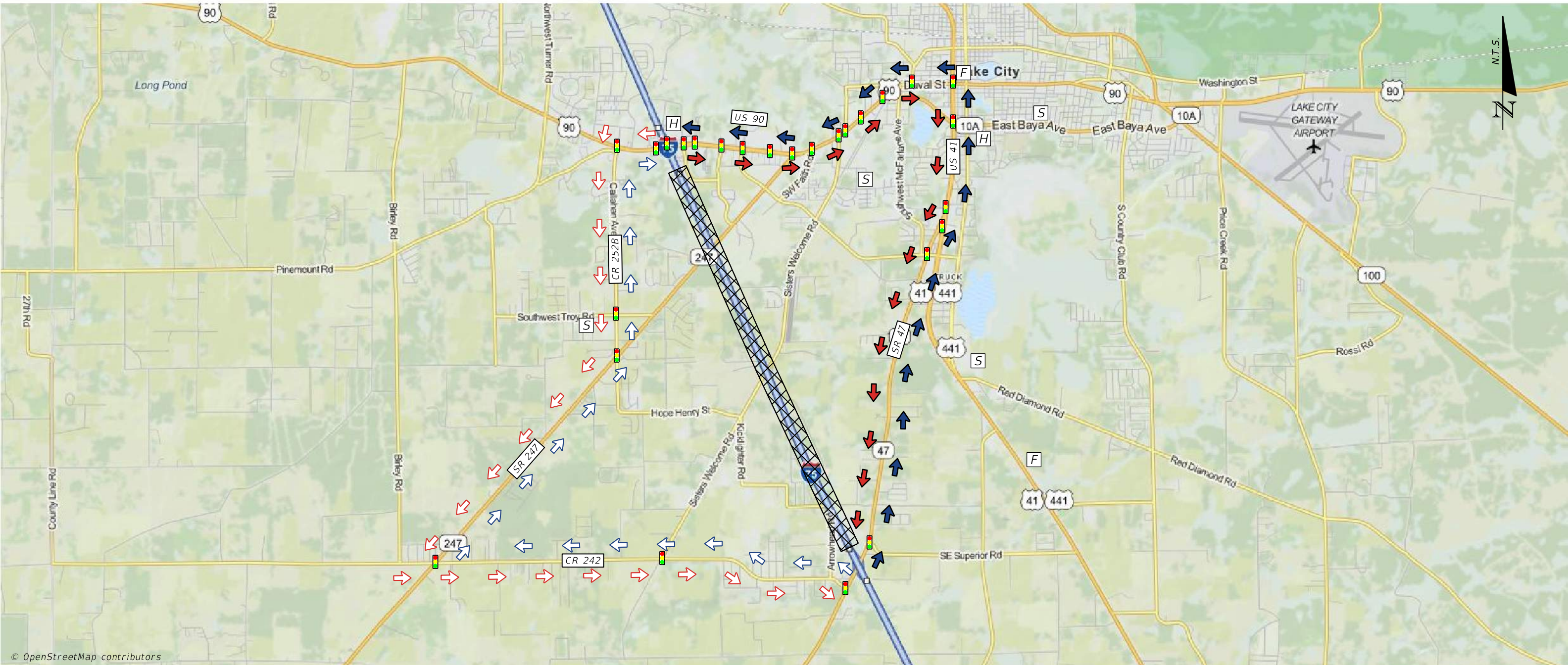
© OpenStreetMap contributors

NOTES			LEGEND	
PRIMARY	NB	NORTHBOUND VEHICLES DIVERTED NORTH ON US 41 TO CR 242 WEST TO I-75.	▣	AREA OF CLOSURE
	SB	SOUTHBOUND VEHICLES DIVERTED EAST ON CR 242 TO US 41 SOUTH TO I-75.	➔	PRIMARY ROUTE SB
SECONDARY	NB	N/A	➔	PRIMARY ROUTE NB
	SB	N/A	➔	SECONDARY ROUTE SB
			➔	SECONDARY ROUTE NB
			⊠	FIRE STATION
			➔	HOSPITAL
			➔	POLICE STATION
			➔	SCHOOL
			➔	SIGNAL
			⊠	F
			⊠	H
			⊠	P
			⊠	S
			⊠	Signal



FEBRUARY 2022

SR 47 TO US 90 (SR 10)



© OpenStreetMap contributors

NOTES

PRIMARY

NB NORTHBOUND VEHICLES DIVERTED NORTH ON SR 47 TO US 41 (SR 100) NORTH TO US 90 (SR 10) WEST TO I-75.

SB SOUTHBOUND VEHICLES DIVERTED EAST ON US 90 (SR 10) TO US 41 (SR 100) SOUTH TO SR 47 SOUTH TO I-75.

SECONDARY

NB NORTHBOUND VEHICLES DIVERTED WEST ON CR 242 TO SR 247 NORTH TO CR 252B NORTH TO US 90 (SR 10) EAST TO I-75.

SB SOUTHBOUND VEHICLES DIVERTED WEST ON US 90 (SR 10) TO CR 252B SOUTH TO SR 247 SOUTH TO CR 242 EAST TO I-75.

LEGEND

AREA OF CLOSURE



FIRE STATION



PRIMARY ROUTE SB



HOSPITAL



PRIMARY ROUTE NB



POLICE STATION



SECONDARY ROUTE SB



SCHOOL



SECONDARY ROUTE NB



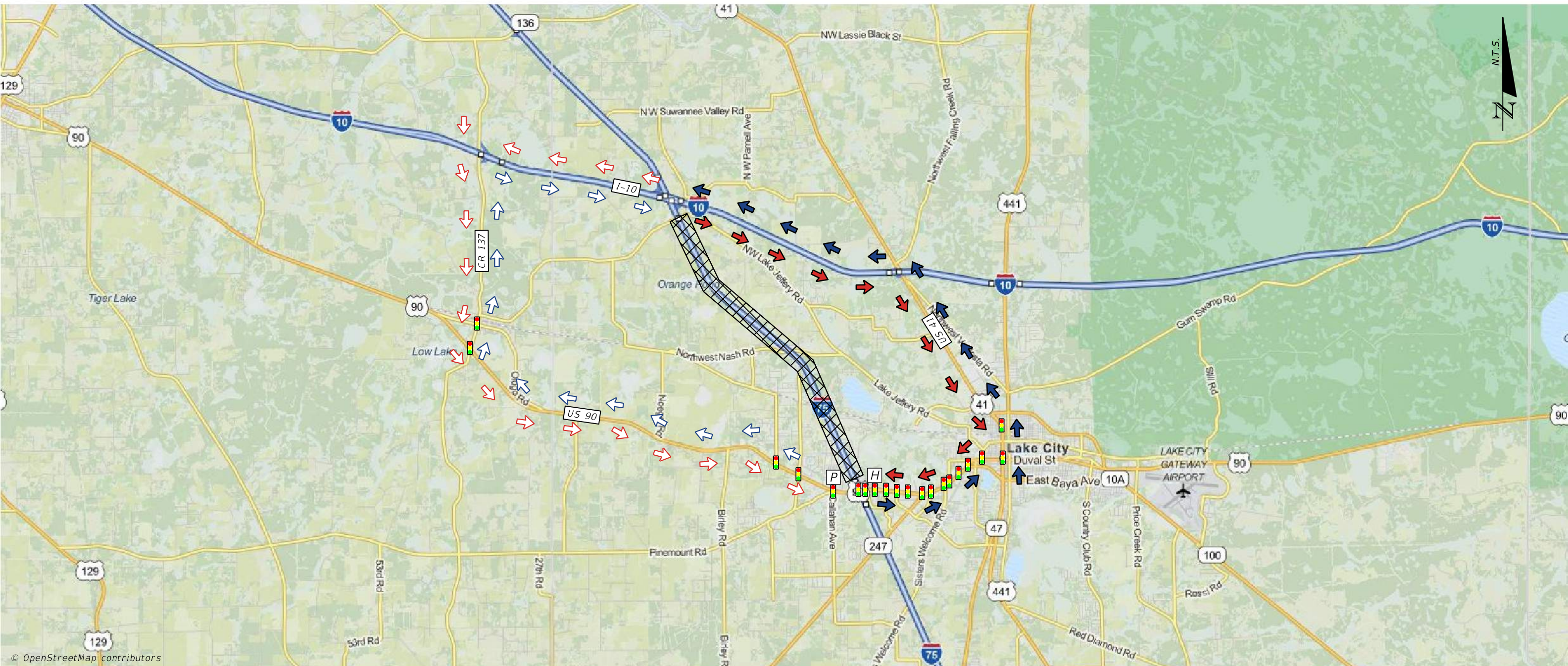
SIGNAL





FEBRUARY 2022

US 90 (SR 10) TO I-10



NOTES

PRIMARY

NB NORTHBOUND VEHICLES DIVERTED EAST ON US 90 (SR 10) TO US 41 (SR 100) NORTH TO I-10 WEST TO I-75.

SB SOUTHBOUND VEHICLES DIVERTED EAST ON I-10 TO US 41 (SR 100) SOUTH TO US 90 (SR 10) WEST TO I-75.

SECONDARY

NB NORTHBOUND VEHICLES DIVERTED WEST ON US 90 (SR 10) TO CR 137 NORTH TO I-10 EAST TO I-75.

SB SOUTHBOUND VEHICLES DIVERTED WEST ON I-10 TO CR 137 SOUTH TO US 90 (SR 10) EAST TO I-75.

LEGEND

AREA OF CLOSURE



FIRE STATION



PRIMARY ROUTE SB



HOSPITAL



PRIMARY ROUTE NB



POLICE STATION



SECONDARY ROUTE SB



SCHOOL



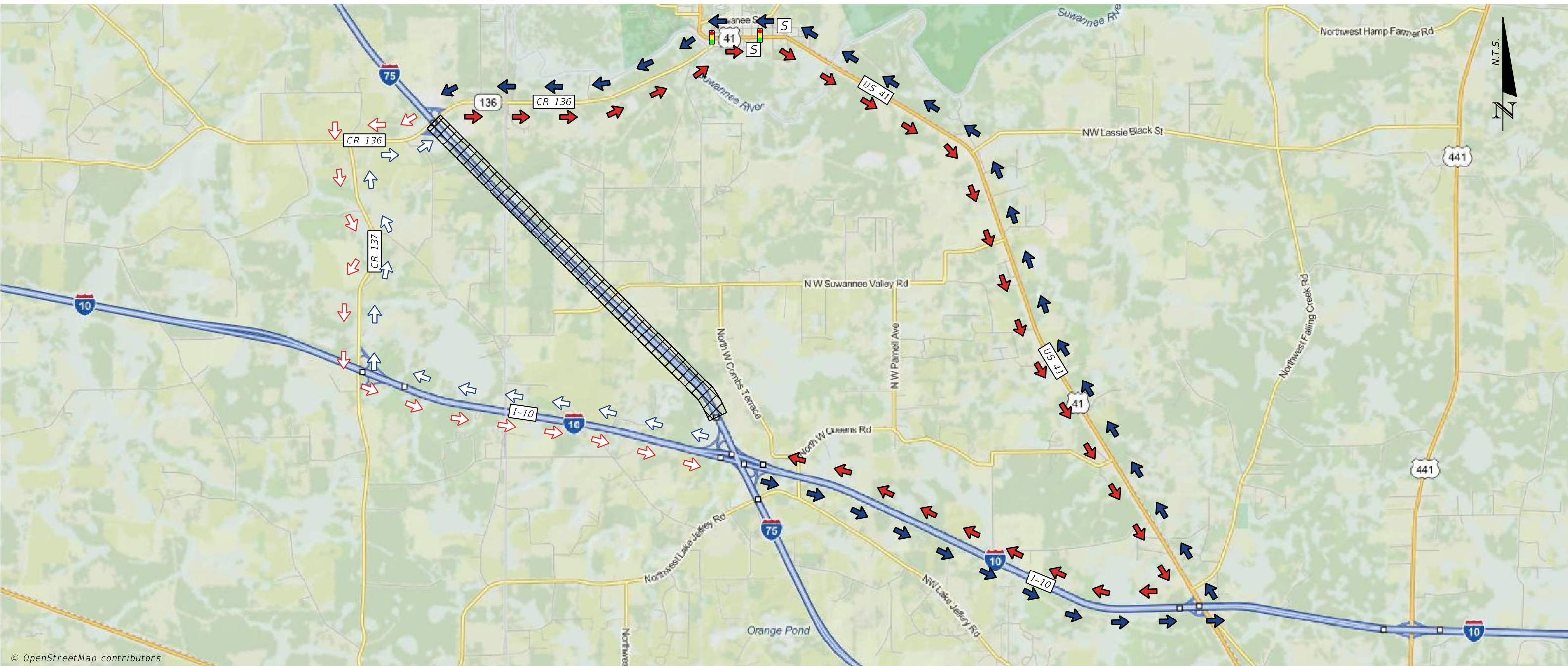
SECONDARY ROUTE NB



SIGNAL



I-10 TO CR 136 (THUNDER RD)

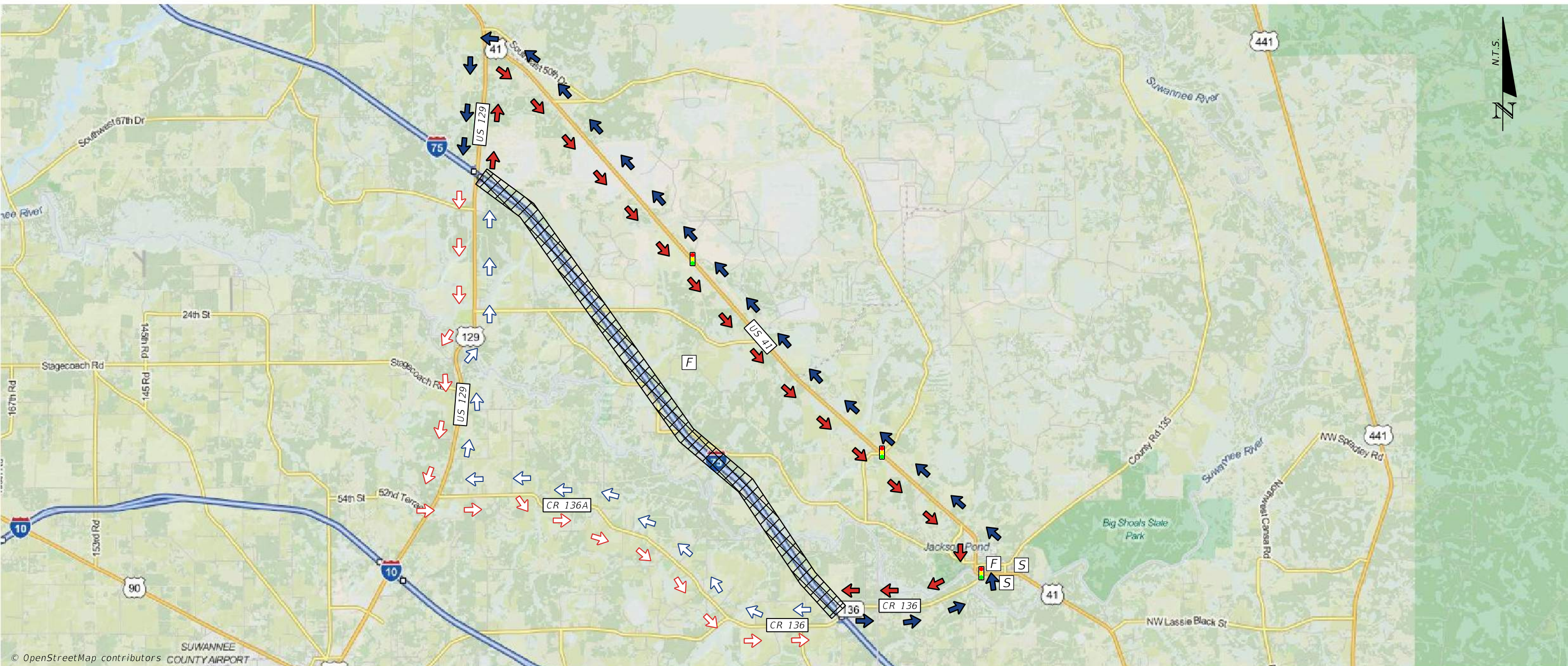


© OpenStreetMap contributors

NOTES		LEGEND	
PRIMARY	NB	NORTHBOUND VEHICLES DIVERTED EAST ON I-10 TO US 41 NORTH TO CR 136 (THUNDER RD) WEST TO I-75.	AREA OF CLOSURE
	SB	SOUTHBOUND VEHICLES DIVERTED EAST ON CR 136 (THUNDER RD) TO US 41 SOUTH TO I-10 WEST TO I-75.	PRIMARY ROUTE SB
SECONDARY	NB	NORTHBOUND VEHICLES DIVERTED WEST ON I-10 TO CR 137 NORTH TO CR 136 (THUNDER RD) EAST TO I-75.	PRIMARY ROUTE NB
	SB	SOUTHBOUND VEHICLES DIVERTED WEST ON CR 136 (THUNDER RD) TO CR 137 SOUTH TO I-10 EAST TO I-75.	SECONDARY ROUTE SB
			SECONDARY ROUTE NB

	FIRE STATION	
	HOSPITAL	
	POLICE STATION	
	SCHOOL	
	SIGNAL	

CR 136 (THUNDER RD) TO US 129 (SR 51)



NOTES

PRIMARY

- NB** NORTHBOUND VEHICLES DIVERTED EAST ON CR 136 (THUNDER RD) TO US 41 NORTH TO US 129 (SR 51) SOUTH TO I-75.
- SB** SOUTHBOUND VEHICLES DIVERTED NORTH ON US 129 (SR 51) TO US 41 SOUTH TO CR 136 (THUNDER RD) WEST TO I-75.

SECONDARY

- NB** NORTHBOUND VEHICLES DIVERTED WEST ON CR 136 (THUNDER ROAD) TO 136A WEST TO US 129 (SR 51) NORTH TO I-75.
- SB** SOUTHBOUND VEHICLES DIVERTED SOUTH ON US 129 (SR 51) TO CR 136A EAST TO CR 136 EAST TO I-75.

LEGEND

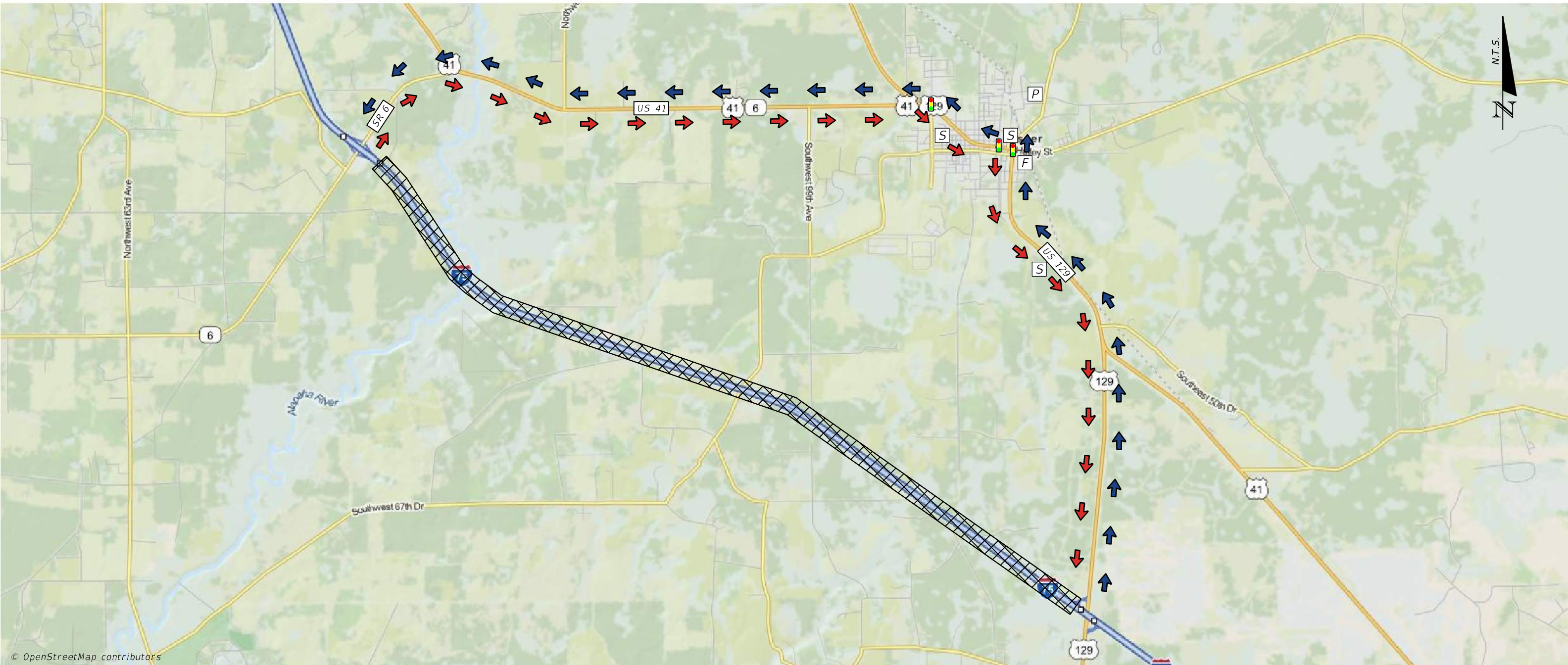
- AREA OF CLOSURE
- PRIMARY ROUTE SB
- PRIMARY ROUTE NB
- SECONDARY ROUTE SB
- SECONDARY ROUTE NB
- FIRE STATION
- HOSPITAL
- POLICE STATION
- SCHOOL
- SIGNAL

- F
- H
- P
- S
-



FEBRUARY 2022

US 129 (SR 51) TO SR 6



© OpenStreetMap contributors

NOTES

PRIMARY	NB	NORTHBOUND VEHICLES DIVERTED NORTH ON US 129 (SR 51) TO US 41 NORTH TO SR 6 WEST TO I-75.
	SB	SOUTHBOUND VEHICLES DIVERTED EAST ON SR 6 TO US 41 SOUTH TO US 129 (SR 51) SOUTH TO I-75.
SECONDARY	NB	N/A
	SB	N/A

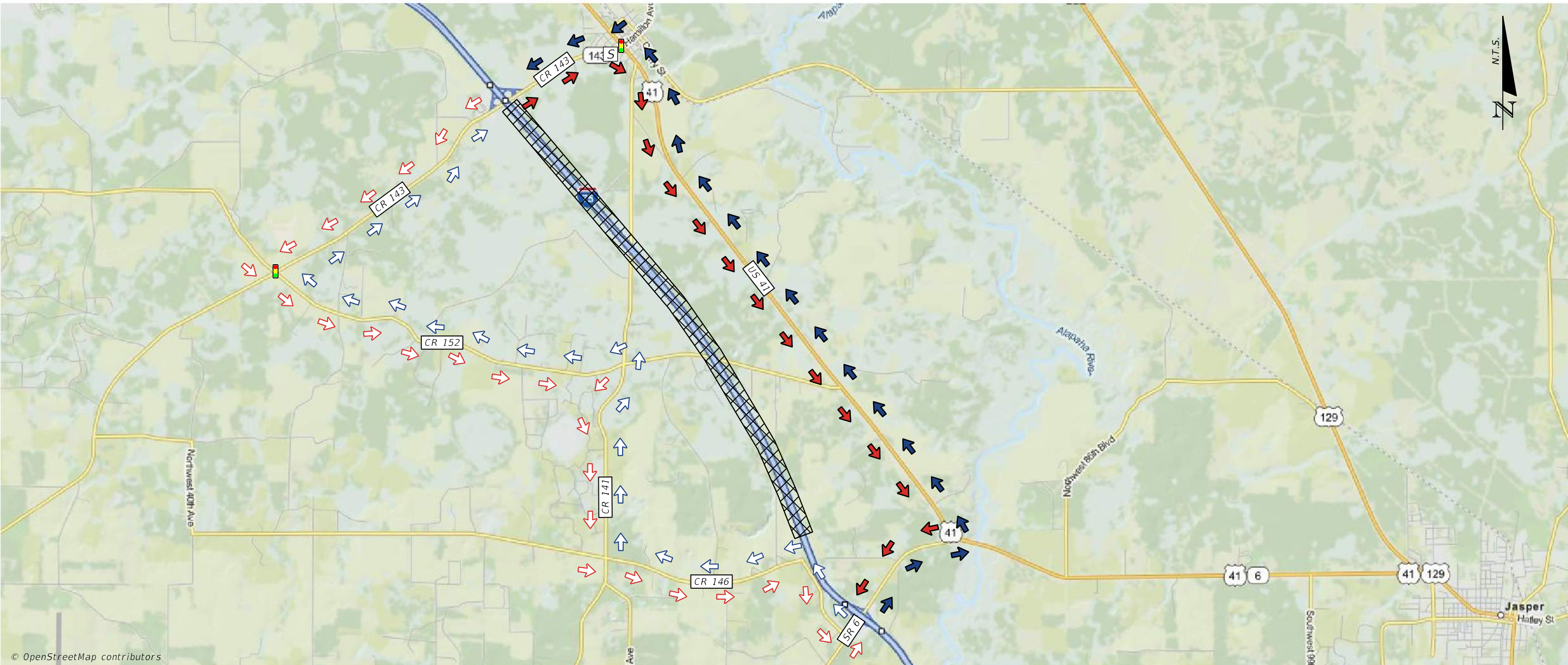
LEGEND

AREA OF CLOSURE		FIRE STATION	
PRIMARY ROUTE SB		HOSPITAL	
PRIMARY ROUTE NB		POLICE STATION	
SECONDARY ROUTE SB		SCHOOL	
SECONDARY ROUTE NB		SIGNAL	



FEBRUARY 2022

SR 6 TO CR 143



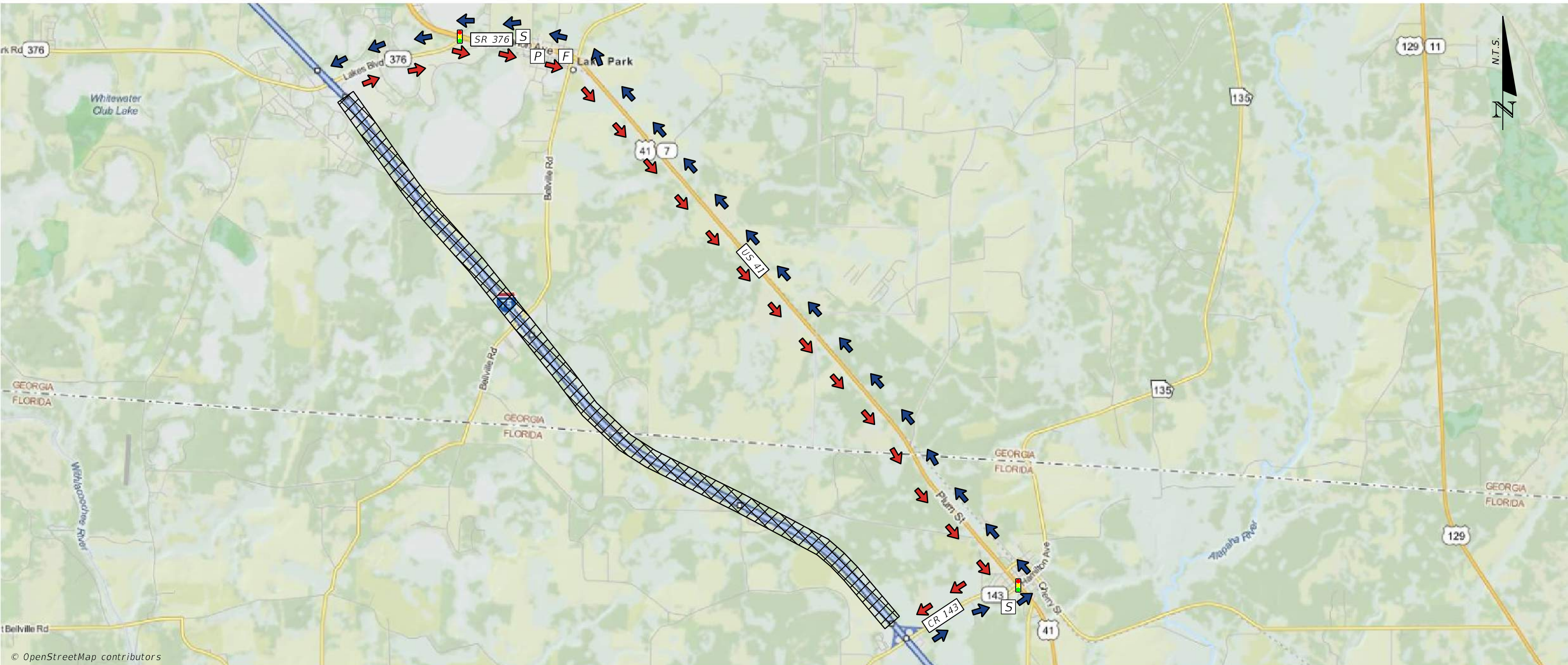
© OpenStreetMap contributors

NOTES				LEGEND	
<p>CR 143 LOAD LIMIT 50,000 LBS. NOT OVER 16,000 PER AXLE.</p> <p>CR 152 WEIGHT LIMIT 11 TONS.</p>	PRIMARY	NB	NORTHBOUND VEHICLES DIVERTED EAST ON SR 6 TO US 41 (SR 25) NORTH TO CR 143 WEST TO I-75.	▣	AREA OF CLOSURE
		SB	SOUTHBOUND VEHICLES DIVERTED EAST ON CR 143 TO US 41 (SR 25) SOUTH TO SR 6 WEST TO I-75.	➔	PRIMARY ROUTE SB
	SECONDARY	NB	NORTHBOUND VEHICLES DIVERTED WEST ON SR 6 TO CR 146 WEST TO CR 141 NORTH TO CR 152 WEST TO CR 143 EAST TO I-75.	➔	PRIMARY ROUTE NB
		SB	SOUTHBOUND VEHICLES DIVERTED WEST ON CR 143 TO CR 152 EAST TO CR 141 SOUTH TO CR 146 EAST TO SR 6 EAST TO I-75.	➔	SECONDARY ROUTE SB
				➔	SECONDARY ROUTE NB
				⊠	FIRE STATION
				➔	HOSPITAL
				➔	POLICE STATION
				➔	SCHOOL
				➔	SIGNAL
				⊠	F
				⊠	H
				⊠	P
				⊠	S
				⊠	Signal



FEBRUARY 2022

CR 143 TO SR 376 (LAKES BLVD)



NOTES

PRIMARY

NB NORTHBOUND VEHICLES DIVERTED EAST ON CR 143 TO US 41 (SR 25)/US 41 (SR 7) NORTH TO SR 376 (LAKES BLVD) WEST TO I-75.

SB SOUTHBOUND VEHICLES DIVERTED EAST ON SR 376 (LAKES BLVD) TO US 41 (SR 7)/ US 41 (SR 25) SOUTH TO CR 143 WEST TO I-75.

SECONDARY

NB N/A

SB N/A

LEGEND

AREA OF CLOSURE



FIRE STATION



PRIMARY ROUTE SB



HOSPITAL



PRIMARY ROUTE NB



POLICE STATION



SECONDARY ROUTE SB



SCHOOL



SECONDARY ROUTE NB



SIGNAL

